



# BASIN BULLETIN

A Quarterly Review of Cleanup in the Coeur d'Alene River Basin

## ***In This Issue:***

**Commission Plans  
2003 Cleanup Work**

**Lake Management  
Plan Update**

**Environmental Grant  
Opportunities**

**Comings & Goings**

**FAQ's**

**Calendar**

---

***Community  
Involvement  
Contact:***

Marianne Deppman  
206-553-1237

---

***Subscriptions &  
Submissions***

The Basin Bulletin can be sent to your email address as a pdf and/or Microsoft Word file. To request addition or corrections to the mailing list, or to make a submission to the Basin Bulletin, please contact:

Pamela Moore, 206-438-2236  
pamela\_moore@urscorp.com

## **Commission Plans 2003 Cleanup Work**

The Basin Environmental Improvement Project Commission, through the Technical Leadership Group (TLG), is in high gear developing plans for cleanup work for the coming 2003 field season. In late January, the TLG and the Citizens Coordinating Council (CCC) met to discuss the TLG's preliminary workplans. The TLG is now refining the plans and preparing to present them to the Basin Commission Board on February 26<sup>th</sup>.

Highlights of the preliminary work plans for this year include: cleanup of two Idaho Fish and Game recreation areas near the lower Coeur d'Alene River; sampling and cleanup of residential soils; cleanup of upper basin source areas; monitoring Lake Coeur d'Alene; public education about protecting the Lake water quality; and a pilot project designed to reduce the amount of metals entering the Mullan wastewater system from the groundwater.

To streamline the work planning process, the Technical Leadership Group split into several Project Focus Teams (PFTs). These teams were each made up of state, tribal, local and federal agency staff with particular expertise or interest. In addition, representatives of the Citizens Coordinating Council provided input to the PFTs as they developed their 2003 plans.

### **Current Project Focus Teams are:**

- Human Health-Residential
- Human Health-Recreational
- Lake Management and Monitoring

### **NewsBriefs Becomes Basin Bulletin**

With the release of the Record of Decision (ROD), EPA's monthly NewBriefs has now become a quarterly publication, the **Basin Bulletin**.

This is the first edition of the Bulletin. We hope it will continue to be a useful information resource to all who are interested in the cleanup in the Coeur d'Alene River Basin.

The focus of the Bulletin will be the work of the agencies doing cleanup work under the ROD for Operable Unit 3 and the Lake Management Plan. We will also continue to provide a calendar of events, including citizen group meetings.

Please let us know your suggestions for making the Basin Bulletin the most useful communication tool it can be.

- Upper Basin Source Areas
- Streambank Stabilization
- Water Treatment
  - Mullan I/I
  - Canyon Creek
- Basin-wide Monitoring
- Biostabilization

This edition of the Bulletin contains an insert page with a contact list for the current Basin Commission Board, TLG members and both TLG and CCC Project Focus Team leaders. Please keep this page as a reference sheet.

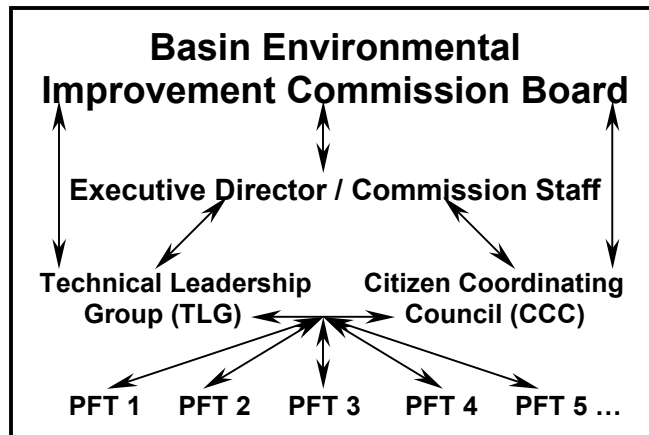
TLG members are representatives of governments that have regulatory or land management responsibility in the Basin. CCC members represent a specific interest, geographic area, special interest group, or have a certain technical or scientific expertise.

The figure below illustrates the current structure of the Basin Commission. For more information about the Commission, visit the webpage at:

<http://www.basincommission.com>

## CCC Gets Organized

With the help of Ross and Associates, the Citizens Coordinating Council (CCC) is making good progress on setting up its organizational structure. A sub-group presented preliminary concepts at the CCC meeting in January and the group hopes to finalize its structure at its next meeting on February 20<sup>th</sup>. The CCC plans to present its organizational structure to the Basin Commission Board on February 26<sup>th</sup>.



Ed Tulloch  
 DEQ Coeur d'Alene  
 2110 Ironwood Parkway,  
 Suite 100  
 Coeur d'Alene, ID 83814  
 Phone: 208-769-1422

Phillip Cernera  
 Coeur d'Alene Tribe  
 850 A Street  
 P.O. Box 408  
 Plummer, ID 83851  
 Phone: 208-667-5772

LMP [1995] to ensure long-term lake water quality protection. Full implementation of the LMP is considered the best way to prevent mobilization of metals from the lakebed.

The original LMP and draft Plan Addendum are available for review at the following locations:

IDEQ Regional Office  
 2110 Ironwood Parkway  
 Coeur d'Alene

North Idaho College Library  
 1000 Garden Avenue  
 Coeur d'Alene

Coeur d'Alene Tribe  
 Natural Resources Office  
 South 30001 Hwy 95, Worley

The documents can be downloaded and public comment may be submitted from DEQ's Lake Management Plan website link at:

<http://www.deq.state.id.us/whatsnew.htm>

For further questions on the Lake Management Plan, please contact:

## Lake Management Plan Update

**The comment period for the Draft Addendum to the Coeur d'Alene Lake Management Plan (LMP) has been extended through 5 p.m. PST, Wednesday, March 26, 2003.**

The Idaho Department of Environmental Quality (DEQ) and the Coeur d'Alene Tribe are recommending modifications to the original

## EPA Updates Community Involvement Plan

Marianne Deppman, EPA's Community Involvement Coordinator, is working on an update to the 1999 Basin Community Involvement Plan. EPA is required to update the Plan after a Record of Decision is issued. In late January, Marianne and Dick Martindale began conducting community interviews with local elected officials and citizen groups to talk about what's working well and what needs improvement in EPA's community involvement efforts. Interviews will continue until early March.

The plan will then be updated to include information from the interviews and to describe the community involvement and communications activities planned

during the active cleanup in the Basin. One of the key elements of the plan will be how EPA and other agencies will work with the Basin Commission to ensure effective and coordinated communication.

Please call Marianne at 800-424-4372 if you would like to schedule an interview.

## Environmental Grant Opportunities

**EPA's Environmental Education Grant Program** invites schools, universities, not-for-profit organizations, and local, state or tribal government educational or environmental agencies to submit proposals by February 14, 2003. The program supports environmental education projects that enhance the public's awareness, knowledge and skills to make informed decisions that affect environmental quality. The Fiscal Year 2003 Solicitation Notice is available at:

<http://www.epa.gov/enviroed/grants.html>

Application forms and more information can also be obtained from:

Environmental Education Grants  
U.S. Environmental Protection Agency  
Public Environmental Resource Center (EXA-124)  
1200 Sixth Avenue  
Seattle, Washington 98101  
800-424-4372 (from Alaska, Idaho, Oregon and Washington)

After reviewing the solicitation, questions may be directed to:

Sally Hanft,  
Region 10 Environmental Education Grant Coordinator  
800-424-4372 or 206-553-1207

**EPA's Regional Geographic Initiative (RGI)** is accepting applications to fund innovative projects in the Pacific Northwest ranging from \$10,000 to \$50,000. The program targets unique geographically-based projects that fill critical gaps in EPA's ability to protect human health and the environment. Applications for the next round of grants must be postmarked by March 18, 2003. More information about the program and application forms are available from the website at:

<http://yosemite.epa.gov/R10/ECOCOMM.NSF/Programs/RGI+Solicitation>

or by calling 800-424-4372 from Alaska, Idaho, Oregon and Washington.

## Comings and Goings

As some of you know, EPA's man-on-the-scene, **Dick Martindale** has headed back to his former position at Panhandle Health District in Coeur d'Alene. Dick was under contract with EPA for the past four years. The contract expired on January 31, 2003. Dick is returning to the Health District to continue his important work on the Rathdrum Prairie Aquifer Critical Materials Program. Dick's contributions to the Coeur d'Alene Basin were tremendous. He was a great resource for citizens, other agencies and EPA. We will all miss him on this project.

**Mary Jane Nearman**, one of EPA's primary project managers for the Coeur d'Alene Basin, has also moved on to other work in Region 10. Mary Jane's efforts on the RI/FS and ROD were immense. Her expertise and management skills will also be greatly missed.

## Information Repositories

North Idaho College Library  
1000 Garden Avenue  
Coeur d'Alene, ID 83814  
208-769-3355

Wallace Public Library  
415 River Street  
Wallace, ID 83873  
208-752-4571

Harrison City Hall  
100 Frederick Street  
P.O. Box 73  
Harrison, ID 83833  
208-689-3212

Spokane Public Library  
906 West Main Avenue  
Spokane, WA 99201  
509-444-5336

EPA Field Office  
1910 Northwest Boulevard,  
Suite 208  
Coeur d'Alene, ID 83814  
208-664-4588

EPA Seattle Office  
Superfund Record Center  
1200 Sixth Avenue  
Seattle, WA 98101  
206-553-4494

## Websites

**EPA Coeur d'Alene Basin**  
[http://  
Yosemite.epa.gov/R10/  
CLEANUP.NSF/sites/cda](http://Yosemite.epa.gov/R10/CLEANUP.NSF/sites/cda)

**Basin Environmental Improvement Project Commission**

[http://  
www.basincommission.com](http://www.basincommission.com)

**Citizens Coordinating Council**

[http://  
www.basincommission.com/  
CCC.asp](http://www.basincommission.com/CCC.asp)

# FAQ's

## Frequently Asked Questions

**Q . What is the Status of EPA's Technical Assistance Grant (TAG)?**

**A .** EPA is continuing to work with the Basin Cleanup Coalition (BCC), the group that applied for the TAG last year. We hope to award the grant within four to six weeks. Jonathan Coe is currently coordinating the BCC. Jonathan can be reached at 208-664-3194.

The BCC is open to any individual or non-profit organization in the Basin whose members may be affected by the Record of Decision. If you or your group would like to participate in the BCC, please contact Jonathan at the number above.

**Technical Assistance Grants are offered by EPA to allow communities affected by National Priorities List sites to hire independent technical advisors, so that they can understand and provide input on cleanup activities.**

**Q . How and why does EPA "certify" areas?**

**A .** Under Superfund, EPA "certifies" areas where Potentially Responsible Parties (PRPs), have completed the cleanup work outlined in a Consent Decree. For example, in 1998, EPA certified the work done by the Upstream Mining Group in the City of Smelterville. Before an area can be certified, the government must inspect the area to ensure all work under the Consent Decree is complete. If the work has not been completed in accordance with the Consent Decree, EPA notifies the PRP of the actions needed for certification. Once all work is complete, EPA provides written notification of the certification to the PRP. Certifications can be granted for all or part of the area where cleanup occurred.

It is important to understand that certification only applies to work specified in a Consent Decree. Certification does not necessarily mean that no additional work is needed in a particular area. For example, EPA may call for Five-Year Reviews to be conducted to make sure the cleanup remains effective. Or, in the case of the Union Pacific Railroad rails to trails work, additional work may be needed on or near the right-of-way as part of the overall Basin-wide cleanup.

## Calendar of Events

### Basin Environmental Improvement Project Commission (BEIPC)

Contact: Luke Russell, 208-783-5781

### Basin Commission Board

**February 26, 2003** – 10:00 a.m. to 4:00 p.m.  
Kootenai County Admin. Bldg., Coeur d'Alene

### Citizen's Coordinating Council (CCC)

**February 20, 2003** - 6:30 to 9:30 p.m.  
Health & Welfare Bldg., Wildcat Way, Kellogg

Please see the Basin Commission's website at:  
[www.basincommission.com](http://www.basincommission.com)

### Other Citizen Group Meetings

#### Shoshone Natural Resources Coalition (SNRC)

**February 11 & 25; March 11 & 25, 2003**

Contact: Connie Fudge, 208-753-6022

Group meets second and fourth Tuesday of each month from 11:30 a.m. to 1:30 p.m. at the Brooks Hotel – 500 Cedar Street, Wallace, ID

#### Silver Valley People's Action Coalition (SVPAC)

Contact: Barbara Miller, 208-784-8891  
PO Box 362, Kellogg, ID 83837

#### Washington Citizens Advisory Committee (WCAC)

Contact: Beth Hodgson, 509-534-6417

#### Board of Directors Meeting

**February 10; March 10; April 15, 2003**

Board meets 2<sup>nd</sup> Monday of each month from 6 to 8 p.m. at Spokane County Water Works Bldg. – 914 E. North Foothills Drive, Spokane

#### General Membership Meeting

**February 19; March 19; April 16, 2003**

Membership meetings are held from 7 to 9 p.m. at the Spokane County Library – 4322 N. Argonne Road, Spokane

**Draft Addendum to the Coeur d'Alene Lake Management Plan Public Comment is due by 5 p.m. PST Wednesday, March 26, 2003.**

## Basin Commission Contacts

### Basin Environmental Improvement Project Commission (BEIPC) – Sherry Krulitz, Chairperson

#### Commission Members

Allred, Steve; IDEQ Director	Phone: 208-373-0240	FAX: 208-373-0417	sallred@deq.state.id.us
Buell, Jack; Benewah County Commissioner	Phone: 208-245-3274	FAX: 208-245-4364	ksather@benewahcounty.org
Iani, John; EPA Region 10 Administrator	Phone: 206-553-1234	FAX: 206-553-1809	iani.john@epa.gov
Krulitz, Sherry; Shoshone County Commissioner	Phone: 208-752-3331	FAX: 208-753-2711	commsec@co.shoshone.id.us
Matheson, Chuck; Coeur d'Alene Tribal Council	Phone: 208-686-5403	FAX: 208-686-6610	mathesonc@cdatribe.org
McCurdy, James; State of Washington	Phone: 509-328-4220	FAX: 509-456-0136	jmccurdy@lawschool.gonzaga.edu
Panabaker, Dick; Kootenai Cty. Commissioner	Phone: 208-769-4450	FAX: 208-667-8534	kc@co.kootenai.id.us

### Technical Leadership Group (TLG) – Phillip Cerna, Interim Chairperson

#### (\*Core BEIPC Staff)

Adams, Bill; EPA Region 10	Phone: 206-553-2806	FAX: 206-553-0124	adams.bill@epa.gov
Audet, Dan; U.S. Fish & Wildlife Service	Phone: 509-893-8001	FAX: 509-891-6748	dan_audet@fws.gov
Brewer, Lloyd; City of Spokane	Phone: 509-625-6968	FAX: 509-625-6537	lbrewer@spokaneecity.org
<b>*Cerna, Phil</b> ; Coeur d'Alene Tribe	Phone: 208-660-8144	FAX: 208-686-5222	philc@cdatribe-nsn.gov
Chung, Angela; EPA Region 10	Phone: 206-553-6511	FAX: 206-553-0124	chung.angela@epa.gov
Connolly, Randy; Spokane Tribe	Phone: 509-258-7709 x13	FAX: 509-258-9600	connolly@spokanetribe.com
Dailey, Anne; EPA Region 10	Phone: 206-553-2110	FAX: 206-553-0124	dailey.anne@epa.gov
Dawson, Shalan; K-S Soil & Water Cons. District	Phone: 208-762-4939	FAX: 208-762-9859	ksswcd@icehouse.net
Dierich, Ginny; U.S. Army Corps of Engineers	Phone: 206-764-3265		elizabeth.v.dierich@nws02.usace.army.mil
<b>*Eckman, Sheila</b> ; EPA Region 10	Phone: 206-553-0455	FAX: 206-553-0124	eckman.Sheila@epa.gov
Erk, Kim; National Resource Conservation Dist.	Phone: 208-762-4939 x108	FAX: 208-762-9859	kim.erk@id.usda.gov
Fortier, David; Bureau of Land Management	Phone: 208-769-5022	FAX: 208-769-5050	david_fortier@blm.gov
Fredrickson, Sid; City of Coeur d'Alene	Phone: 208-769-2367	FAX: 208-769-2366	sidf@cdaid.org
Frutchey, Frank; Benewah County	Phone: 208-682-2077	FAX: 208-682-2077	
Gunderman, Jack; Coeur d'Alene Tribe	Phone: 208-686-1118	FAX: 208-686-5222	gunderman@cdatribe-nsn.gov
Hansen, Jim; U.S. Fish & Wildlife Service	Phone: 509-893-8034	FAX: 509-891-6748	jim_hansen@fws.gov
Hanson, Rob; IDEQ	Phone: 208-373-0290	FAX: 208-373-0417	rhanson@deq.state.id.us
Hardy, Rogers; Benewah County	Phone: 208-689-3731		rogershardy@aol.com
Helmich, Bryan; ID Dept. of Fish & Game	Phone: 208-769-1414	FAX: 208-769-1418	bhelmich@idfg.state.id.us
Holling, Darryl; City of Post Falls	Phone: 208-773-1438	FAX: 208-773-0311	Dholling@Postfallsidaho.org
Johnson, Jeff; U.S. Forest Service	Phone: 208-765-7442	FAX: 208-765-7307	jkjohnson@fs.fed.us
Kirschner, Fred; Spokane Tribe	Phone: 509-924-0184		fredk@icehouse.net
LePard, David; ID Dept. of Water Resources	Phone: 208-769-1450	FAX: 208-769-1454	dlepard@idwr.state.id.us
Miller, Stan; Spokane County Utilities Office	Phone: 509 477-7259	FAX: 509 477-4715	smiller@spokanecounty.org
Moreen, Ed; U.S. Army Corps of Engineers	Phone: 208-762-5915	FAX: 208-762-5915	edward.w.moreen@nws02.usace.army.mil
Mullen, Tom; MFG Environmental	Phone: 208-667-2948	FAX: 208-667-1739	tom.mullen@mfgenv.com
<b>*Roland, John</b> ; Washington Dept. of Ecology	Phone: 509-329-3581	FAX: 509-456-5056	jrol461@ecy.wa.gov
<b>*Russell, Luke</b> ; IDEQ	Phone: 208-783-5781	FAX: 208-783-4561	lrussell@nidlink.com
Rust, Bill; Shoshone County	Phone: 208-556-8020		wcrust@imbris.com
Schlepp, Mike; K-S Soil & Water Cons. District	Phone: 208-689-3593		farmermike@nidlink.com
Sheppard, Clyde; Kootenai County	Phone: 208-773-9116	FAX: 208-773-0162	chsheppard@imbris.com
Stevenson, Mike; Bureau of Land Management	Phone: 208-769-5024	FAX: 208-769-5050	mike_stevenson@blm.gov
Tesoro, Ray; U.S. Forest Service	Phone: 406-329-3523	FAX: 406-329-3198	rtesoro@fs.fed.us
Washburn, Carl; ID Department of Lands	Phone: 208-666-8606	FAX: 208-769-1597	cwashburn@dol.state.id.us
Woods, Paul; U.S. Geological Survey	Phone: 208-387-1353	FAX: 208-387-1372	pfwoods@USGS.gov
Zilka, Nick; IDEQ	Phone: 208-783-5781	FAX: 208-783-4561	nzilka@nidlink.com

#### TLG Project Focus Team (PFT) Leads

Basin-wide Monitoring – Anne Dailey	Phone: 206-553-2110	FAX: 206-553-0124	dailey.anne@epa.gov
Biostabilization – Bill Adams	Phone: 206-553-2806	FAX: 206-553-0124	adams.bill@epa.gov
Biostabilization – Anne Dailey	Phone: 206-553-2110	FAX: 206-553-0124	dailey.anne@epa.gov
Human Health/Recreation – Angela Chung	Phone: 206-553-6511	FAX: 206-553-0124	chung.angela@epa.gov
Human Health/Residential – Rob Hanson	Phone: 208-373-0290	FAX: 208-373-0417	rhanson@deq.state.id.us
Lake Monitoring – Phillip Cerna	Phone: 208-660-8144	FAX: 208-686-5222	philc@cdatribe-nsn.gov
Streambank Stabilization – Anne Dailey	Phone: 206-553-2110	FAX: 206-553-0124	dailey.anne@epa.gov
Streambank Stabilization – John Roland	Phone: 509-625-5182	FAX: 509-456-6175	jrol461@ecy.wa.gov
Streambank Stabilization – Nick Zilka	Phone: 208-783-5780	FAX: 208-783-4561	nzilka@nidlink.com
Upper Basin Source Areas – Bill Adams	Phone: 206-553-2806	FAX: 206-553-0124	adams.bill@epa.gov
Water Treatment/Canyon Creek – Bill Adams	Phone: 206-553-2806	FAX: 206-553-0124	adams.bill@epa.gov
Water Treatment/Mullan I/I – Luke Russell	Phone: 208-783-5781	FAX: 208-783-4561	lrussell@nidlink.com

#### CCC Project Focus Team Volunteer Leads

Human Health/Recreation – Connie Fudge	Phone: 208-753-6022	FAX: 208-556-2025	fabfudge@imbris.com
Human Health/Residential – Connie Fudge	Phone: 208-753-6022	FAX: 208-556-2025	fabfudge@imbris.com
Lake Monitoring – Kristy Reed Johnson	Phone: 208/777-1588	FAX: 208/777-1615	kristyr@earthlink.net
Streambank Stabilization – Toni Hardy			rogtonihardy@aol.com
Water Treatment – Richard Costa			



---

United States Environmental Protection Agency, Region 10  
Community Involvement and Outreach  
1200 Sixth Avenue, ECO-081  
Seattle, Washington 98101-1128